

Ashling Genia for Infineon TriCore Microprocessors

Networked OCDS Emulator for TriCore devices

Ashling's Genia-TriCore Emulator, supplied and supported by Arcadi Systems, is a powerful Networked Emulator for embedded development with Infineon's TriCore 32-bit embedded microprocessor family.



Genia-TriCore connects to the OCDS debug interface port on the target embedded microprocessor.

Genia debugging is completely non-intrusive and requires no target system resources. Together with Ashling's PathFinder source debugger, Genia provides powerful run/stop control of embedded software, with hardware and software breakpoints. Genia provides fast code download to the target system, and allows control and interrogation of all core-processor and system resources. Genia incorporates high speed Ethernet, USB and serial connections to the host PC.

Genia and PathFinder provide **Flash Programming** for On-Chip TC17xx and external Flash memory.

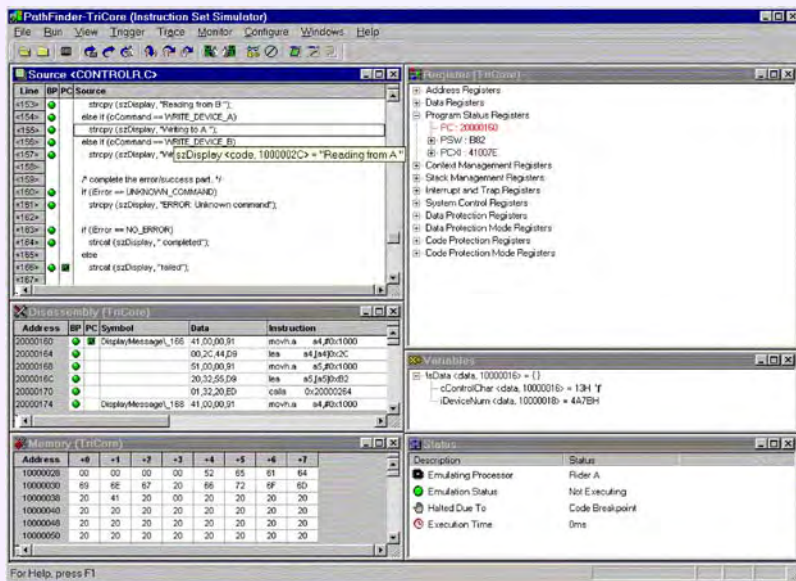
The Genia Emulator and PathFinder debugger provide full multi-core debug support for the **TriCore Peripheral Control Processor (PCP)**, with separate windows to view disassembled PCP instructions, PCP memory, registers and context.

Ashling's TriCore debug products were developed in co-operation with Infineon Technologies.

Source-level Debugger

PathFinder is Ashling's C Source-Level Debugger for TriCore microprocessors, with multiple user-configurable windows, point-and-click, drag-and-drop, hover help and hover data display, splitter windows, menu-bar, button, hot-key and script (macro)-file controls. PathFinder runs on all current versions of Windows. PathFinder's Object-Oriented Monitoring and Editing System provides tree-structured "click to expand" access to all memory-areas, register sets, registers and bits of the TriCore core and co-processors with a logical and friendly Windows display.

PathFinder is the user-interface for the Ashling Genia-TriCore and Vitra-TriCore Emulators for Infineon's TriCore embedded microprocessor families.



Compiler support: Supports all popular TriCore C compilers, including GNU GCC, Green Hills Systems and Altium-Tasking, and all other ELF/DWARF compliant compilers. Supports Altium-Tasking and Green Hills Software **PCP** Assemblers.

Multi-core/Coprocessor support: Full debug support for TriCore Peripheral Control Processor (PCP) and for multi-core TriCore systems.

RTOS Monitoring: Integrated RTOS Monitoring Window.

Host: PC with Windows Vista/XP/2000. Ethernet (RJ45), USB and RS232 serial connections to host PC.

Script language: Powerful macro language to control, monitor and log all Emulator functions.

PathFinder (left) provides source-level debugging for TriCore embedded systems, with mouse, command-line, accelerator-key and button-bar controls

Genia Emulator Specification

- Run/stop control of target application including go, halt, step over, step into and step out of.
- Full variable expression handling.
- On-the-fly Display/read/write of target system memory, peripheral registers and IO space.
- Simultaneous display of source and assembly application code.
- High-speed application code download.
- Support for all on-chip hardware breakpoints; unlimited software breakpoints.
- Breakpoints and Triggers on Code and Data accesses
- Automatic sensing of target operating voltage; support for low voltage target systems.
- PathFinder Flash Programming Utilities Package.

Target connection: Standard Infineon TriCore OCDS1 (16-pin) connectors (compatible with Infineon TriBoard evaluation boards). Genia supports 1.8V, 2.5V, 3.3V and 5V target systems.

Auxiliary inputs/outputs: 4 auxiliary control outputs to target and 4 inputs, all under user control from PathFinder.

Device Support: All Infineon TriCore cores with OCDS1 on-chip debug interface, including TC1796, TC1792, TC1776, TC1775, TC1765 and TC1130, and Infineon TriBoard TriCore Evaluation Boards. Contact Arcadi Systems for support on new TriCore devices.

Order Codes

Product	Order Code
Genia Networked Emulator	Genia-TriCore
PathFinder-TriCore Source Debugger	PathFinder-TriCore
TriCore OCDS1 debug probe cable	TPA-TC-OCDS1-16

Ashling Microsystems Ltd. reserves the right to alter product specifications at any time and without notice



DS205 V2A



Ashling Sales & Support Center
Arcadi Systems
 8345 NW 66th St., Suite 9122
 Miami, FL 33166-2626
 USA

Tel: (408) 884 3020
 Fax: (267) 654 3026
 Email: info@arcadisystems.com
www.arcadisystems.com